

# SUPPRESSOR

For 5.56mm & 7.62mm MGs



Suppressor 5.56mm

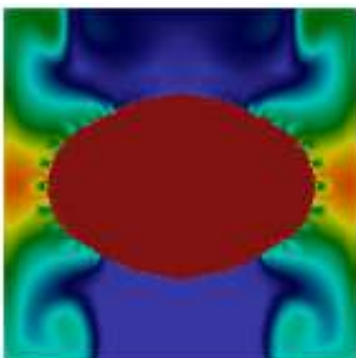


Suppressor 7.62mm

## Product Description

The Platt Suppressor is a premium suppressor for range of calibers designed through Platt 'SMARS' (Signature Management & Reduction System) providing accuracy and volumetric efficiency.

Manufactured for extreme durability and performance using modern manufacturing, test and validation techniques, the Platt suppressor has minimal point of impact shift and effectively reduces flash and sound signatures in all conditions and rates of fire.



## Technical Information

- Compatibility: 5.56mm and 7.62mm calibers
- Suppressor 5.56mm: 49mm H x 68mm W x 157mm L / Weight: 420g
- Suppressor 7.62mm: 58mm H x 80mm W x 185mm L / Weight: 695g

## Application:

For use on Assault rifles, sniper rifles and belt fed machine guns



# FLIP MOUNT

with Picatinny rail



## Product Description

The Platt Flip mount is an Australian-made premium front sight mount with quick locking mechanism for easy install and deploy and can be quickly flipped in and folded out of the optics when not in use. Constructed of hard anodised aluminium and black zinc chromated stainless steel and developed through fast and efficient manufacturing techniques, the Platt flip mount is a low profile design, lightweight and durable, and ideal for use with a variety of optics.



## Application:

Machine guns with Picatinny rail compatible

## Technical Information

- Picatinny rail attachment
- Weight: 130g
- Length: 74mm
- Width: 60mm
- Height: 14mm

# TRIPOD

For 7.62mm & 12.7mm MGs



12.7mm Tripod



7.62mm Tripod



## Product Description

The Platt Tripod is a Lightweight Infantry Tripod (LWIT), an innovative, vigorous and modular ground gun mount designed to suit light and heavy machine guns. Constructed of carbon fiber, the Platt LWIT is engineered to fit multiple re-attachable feet with high strength and stability, rapid field deployment and injuries risk reduced from lifting and transportation. The 3-axis leg motion is capable of handling a variety of terrains while increasing operational efficiency.



- 50% weight reduction (from original steel version)
- High strength (minimum FoS = 20)
- Low profile tube clamp design
- Integrated G3 receiver
- Modular design (ILS, servicing, repair, redeploy)
- Configure feet to match environment of all conditions
- Corrosion resistant materials used throughout
- 3-axis leg motion improving stability

## Technical Information



- Compatibility: 40-50 Softmount to fit 5.56mm/7.62mm & 12.7mm MGs
- Length: stowed: 1120mm; deployed: 2030mm
- Width: stowed: 210mm; deployed: 1130mm
- Height: stowed: 180mm; deployed: 270mm
- Traverse: 30 degrees (left) & 30 degrees (right)

**12.7mm Tripod**  
**Mass: ~10kg**

- Length: stowed: 612mm; deployed: 868mm
- Width: stowed: 218mm; deployed: 797mm
- Height: stowed: 213mm; deployed: 236mm
- Traverse: 65 degrees (left) & 30 degrees (right)

**7.62mm Tripod**  
**Mass: ~7.5kg**