

PLATT SWING MOUNT

for MAG-58/M240 and Minimi/M249 machine guns



PLATT SWING MOUNT



- Stainless steel or aluminium
- Suits any armoured or soft-skinned vehicle
- In service with nine user nations

**Combat Proven by Coalition
Forces in the MEAO**



Platt Swing Mount

Originally developed for the Australian Army's ASLAV 8x8 armoured cavalry vehicle program, the Platt Swing Mount is designed to accommodate the MAG-58/M240 7.62mm general purpose machine gun and Minimi/M249 light support weapon. Now in service with Australia, New Zealand, Saudi Arabia (National Guard) and the United States (Army and Marine Corps) as well as British, Canadian, German, Iraqi and Italian ground forces, the Platt Swing Mount is the world benchmark for vehicle-mounted manually-operated machine gun mounts.

Constructed of either stainless steel or aluminium, the Platt Swing Mount is ideal for installation on a wide variety of both soft-skinned and armoured vehicles. The system is fitted to tracked vehicles such as the Bv-206S and M113 ACV and wheeled vehicles such as LAVIII, Stryker, ASLAV, HMMWV, Bushmaster and a range of lightweight special operations platforms. The Platt Swing Mount can also be adapted for use with the MG3 7.62mm medium machine gun.

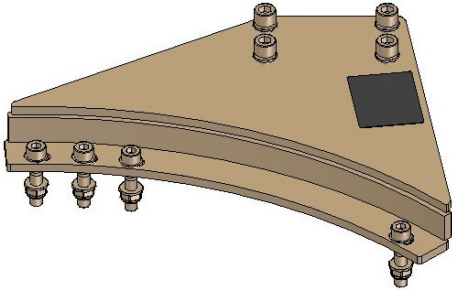


Combat proven under all environmental and climatic conditions, including existing theatres of operation, the Platt Swing Mount is renowned for its accuracy, controllability and operator accessibility. Smart design coupled with end user feedback gathered from real combat missions has resulted in a product that is low maintenance, reliable and completely dependable when it matters.



Adapters

A range of adapters are available for the standard Platt Swing Mount to suit a wide variety of soft-skinned and armoured vehicles, all of which are proven and in use.



Adapter for M1114 TOW variant



Separator 3-inch, general purpose

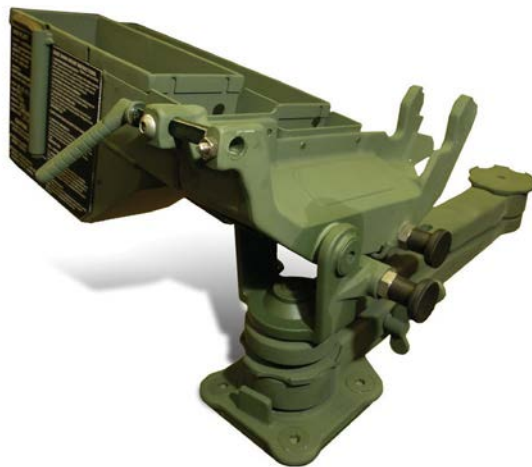


LAV Separator for LAV 25mm gun turret

Clamp-on 30 Adapter for any vertical surface



SPECIFICATIONS



Weapon Compatibility: MAG-58/M240 7.62mm GPMG;
Minimi/M249 5.56mm LSW

Ammunition Tray Capacity: 7.62mm – 200rds
5.56mm – 200rds

Weight (incl cradle): Stainless Steel – 19kg
Aluminium – 13kg

Weapon Traverse: 130 degrees left and right of front axis

Weapon Elevation: +80 degrees

Weapon Depression: -60 degrees

Vehicle Interface: Can be fitted with adapter (P10091)
suitable for any standard AMU mounting point or user pattern

Standard Features: Adjustable and/or lockable knuckle joints
for increased weapon control or for setting arcs of fire.



High Reliability, Combat Proven.

W&E Platt Pty Ltd

PO Box 438, Ingleburn, NSW 1890, Australia

Tel: + 612 9829 0400

Email: info@plattmounts.com

www.plattmounts.com